

WWW.THONK.CO.UK

SONG HUEI - 9mm Snap-In Insulated Shaft Potentiometer With White Indicator Line

Part Number

R0904N - B 50K , L- 25 KQ
 Taper Resistance value Shaft Length Shaft Type



General

Operating temperature -10 °C ~ +70 °C
 Manual soldering 300 °C Max 3sec

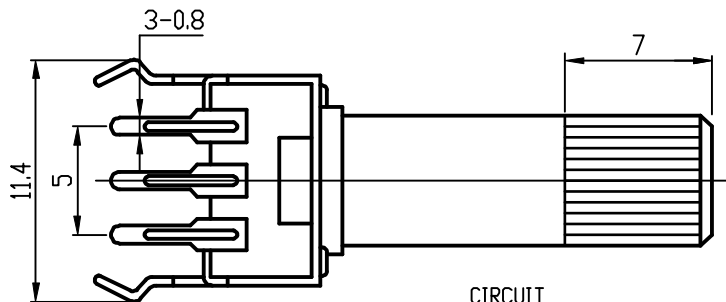
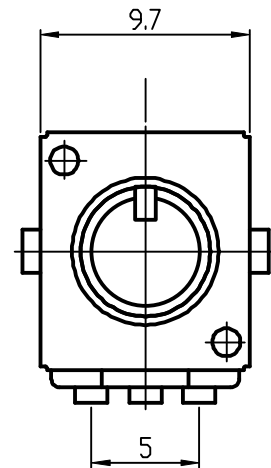
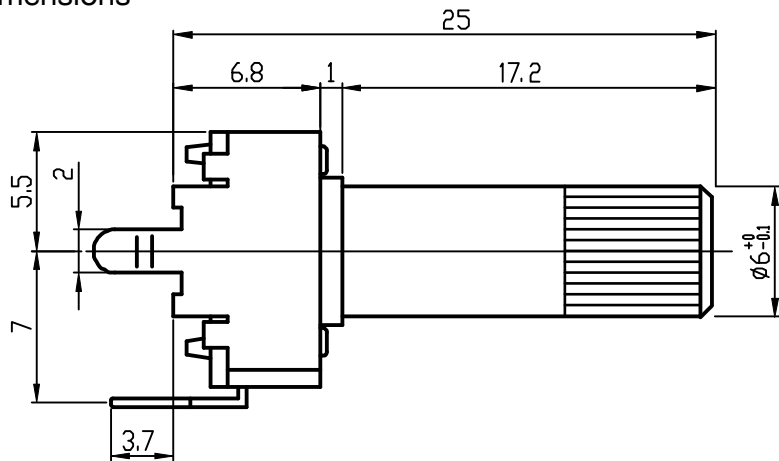
Mechanical Characteristics

Total rotational angle 280° ± 10°
 Rotational torque 30 ~ 150 gf.cm
 Rotational stopper strength 3Kgf.cm Min
 Shaft push-pull strength 4Kgf. Max
 Rotational life 15,000 Cycles.

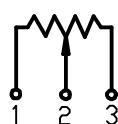
Electrical Characteristics

Total resistance 500Ω ~ 1MΩ
 Resistance tolerance ± 20%
 Resistance taper A B C
 Sliding Noise Less than 80 mV
 Residual resistance Term 1~2 :Less than 20Ω
 Term 2~3 :Less than 40Ω
 Insulation resistance More than 100MΩ at DC 250V
 Rated power(W) 0.05W
 Max. Operating voltag AC 50V / DC 20V
 Withstand voltage 1 Minute at AC 250 V

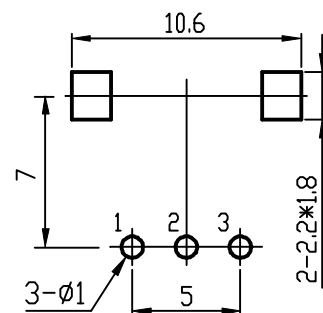
Dimensions



CIRCUIT



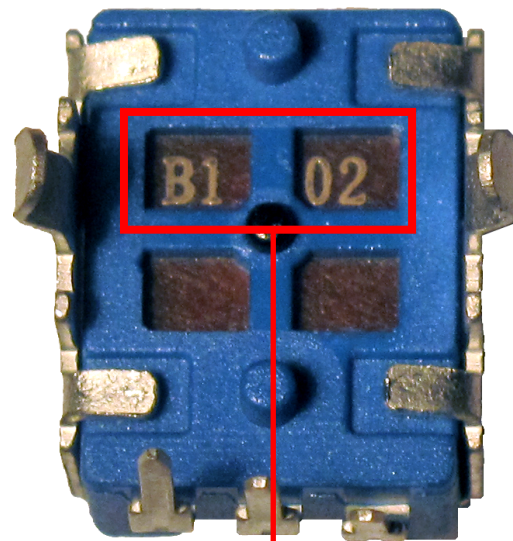
PCB LAYOUT



The resistance value of these pots is identified by the code on the underside as detailed below.

NOTE: The pot value cannot easily be identified once soldered into place.

B1 02 = B1K
B2 02 = B2K
B5 02 = B5K
B1 03 = B10K
B2 53 = B25K
B5 03 = B50K
B1 04 = B100K
B2 54 = B250K
B5 04 = B500K
B1 05 = B1M
A5 02 = A5K
A1 03 = A10K
A2 53 = A25K
A5 03 = A50K
A1 04 = A100K
A2 54 = A250K
A5 04 = A500K
A1 05 = A1M



B1 02 = B1K