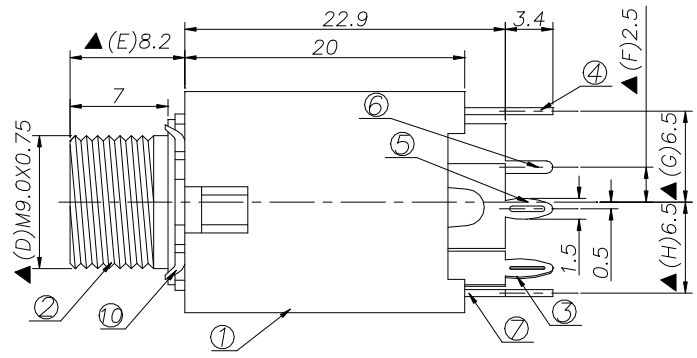
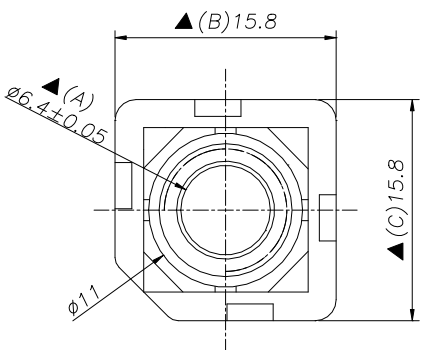
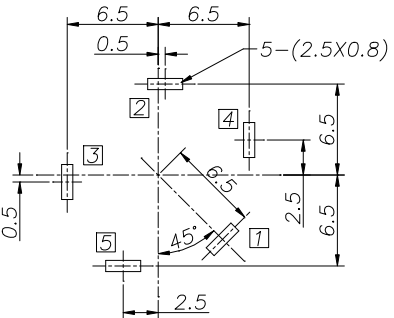
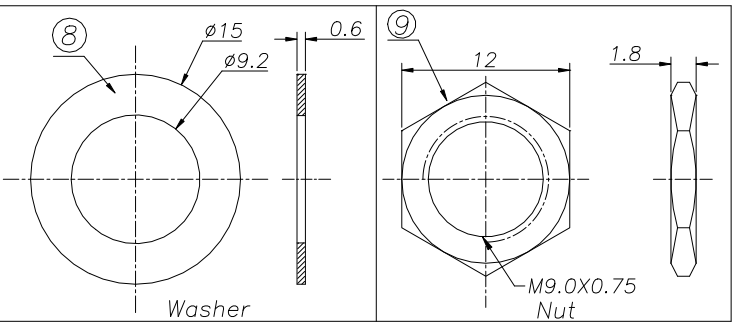
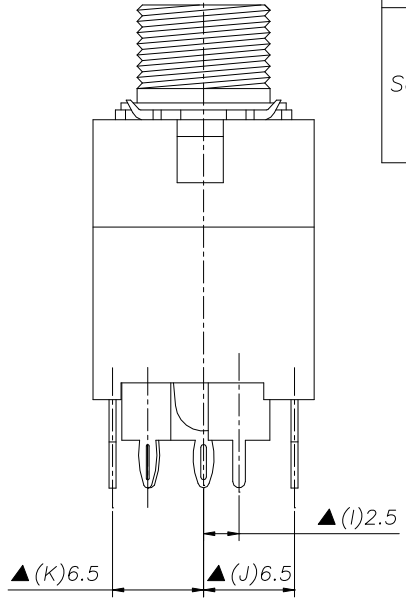


REV. LTR.	DESCRIPTION	SIGN	DATE
	Update drawing	Zhang.xk.	2011.05.14.



Model NO.	PJ612A-A	PJ612A-B	PJ612A-C	PJ612A-D	PJ612A-E	PJ612A-F
Schematic						

- Specification:**
- Rating : DC 30V 1A;
  - Contact resistance:  $\leq 30m\Omega$  ;  
After test:  $\leq 50m\Omega$
  - Insulation resistance:  $\geq 100M\Omega$  (500VDC) ;  
After test:  $\geq 50M\Omega$
  - Withstand voltage: 500VAC ;
  - Insertion and extraction force: 5N~35N;
  - life test: 5000cycles min;
  - Operation temperature range:  $-20^{\circ}C \sim 70^{\circ}C$
  - Preservative temperature range:  $-40^{\circ}C \sim 85^{\circ}C$
  - Sign"▲" is importance dimension



**RECOMMENDED P. C. B. LAYOUT**  
**UNSPECIFIED TOLERANCE:  $\pm 0.05$**   
**(BOTTOM VIEW)**

⑩	Washer-2	1	Stainless steel	
⑨	Nut	1	Copper alloy	Nickel plating
⑧	Washer-1	1	Stainless steel	Nickel plating
⑦	Shunt terminal-2	5	Brass,t0.4	Silver/Tin plating
⑥	Shunt terminal-1	4	Brass,t0.4	Silver/Tin plating
⑤	Ring Spring	3	Phosphor bronze,t0.4	Silver/Tin plating
④	Tip Spring	2	Phosphor bronze,t0.5	Silver/Tin plating
③	Earth Spring	1	Brass,t0.35	Silver/Tin plating
②	Screw bushing	1	Copper alloy	CuSn/Nickel plating
①	Housing	1	ABS	Black

NO.	DESCRIPTION	QTY	MATERIAL	REMARK
UNIT: MM		MODEL NO:		PAPER NO: A4
TYPE:  06.35 PHONE JACK		WQP - PJ 612A		PAGE 1 OF 1
		TOLERANCE	ANGLES	SCALE
		$\pm 0.3$	$\pm 2'$	FULL
				VER
				2

DESIGNED BY:	Zhangxiuke	2011.05.14	WENZHOU QINGPU ELECTRONICS CO.,LTD	
CHECK BY:				
APPROVED BY:				