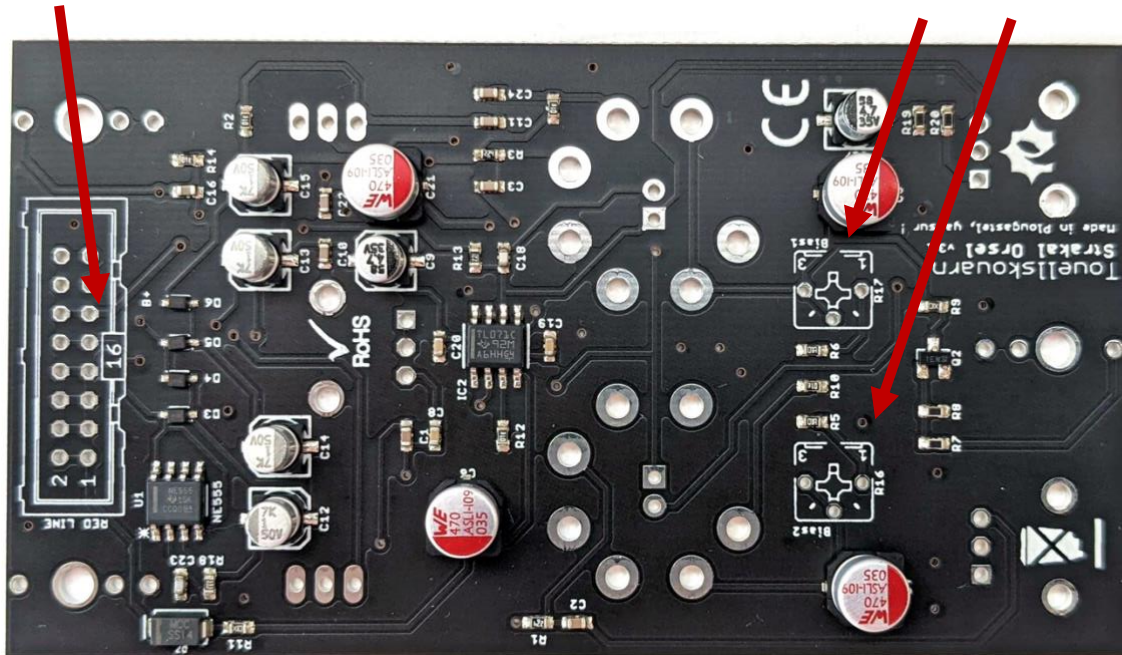


Strakal Orsel 2022 – Build Document V2

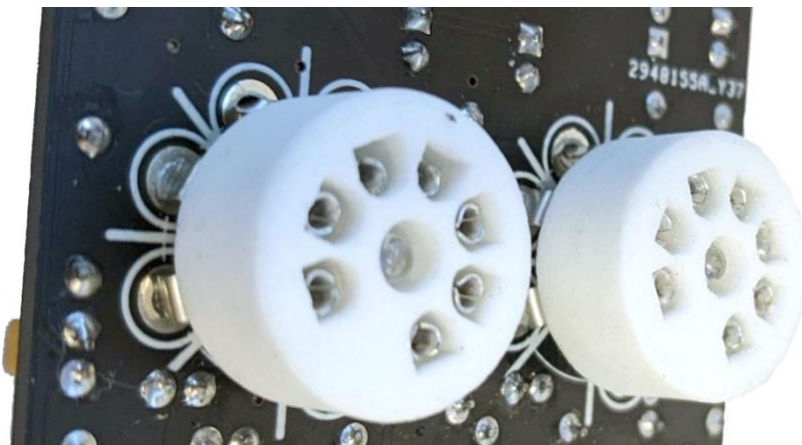
1. Start by soldering the 2 x 10K trimmers at R16 and R17 (Bias1, Bias2)
2. Next solder in the 16 pin power header – **mind polarity**: the notch in the header must face towards the centre of the PCB (align with the text '16')

Power header (notch faces inwards)

2 x 10K trimmers

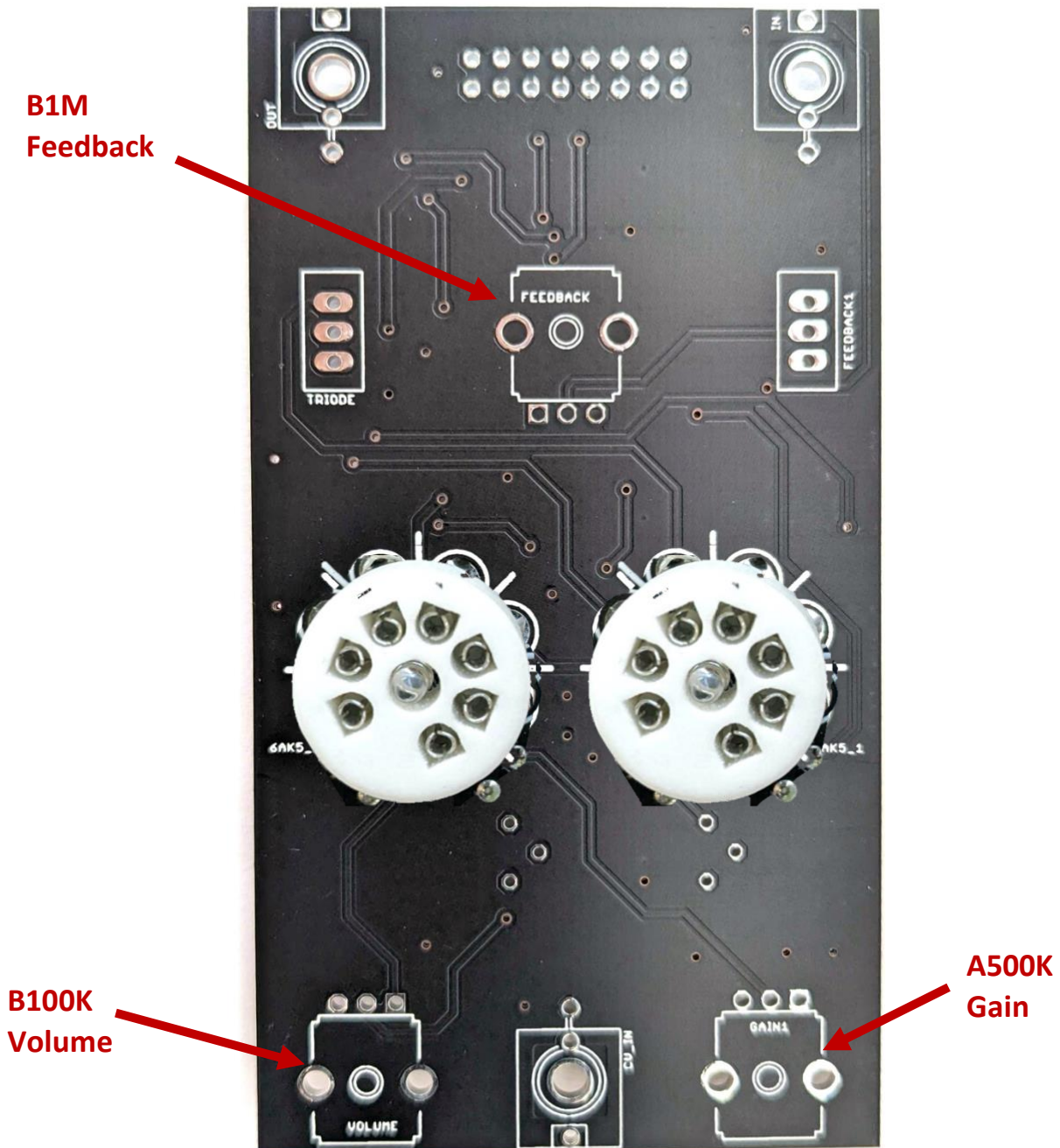


3. Next turn over the PCB and place but **don't solder yet** the 2 x LEDs. **Mind polarity**: **The long leg must go to the square pad**. Before soldering the LEDs place the white tube sockets - the LEDs sit in the centre of each socket. Turn The PCB over and push the LEDs through so that the LED bulb sits roughly level with the top of the hole in the tube socket as shown below, then solder the pins of both LEDs and sockets.



Strakal Orsel 2022 – Build Document V2

4. Next place but **don't solder yet** the switches, jacks, and pots. Note the pots are all different values – see below for correct placement. When all parts have been placed, fit on the front panel and screw nuts/washers onto all the pots, jacks and switches to hold everything in place. Then turn over and solder all pins.



5. Now finally attach the knobs and place the tubes all the way into their sockets.

Important: It is essential to have the module switched off when placing or replacing the tubes! Do not power up this module unless the tubes are installed!!!

The two bias trimmers are for gain stages in the circuit. TouellSkouarn recommend setting them in the middle to start off – they can then be adjusted if desired.

