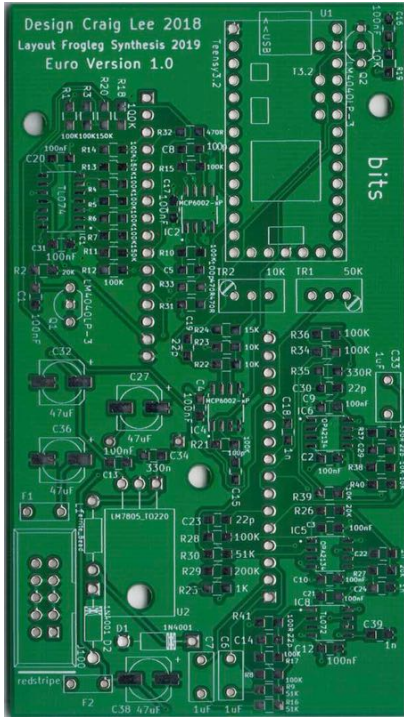


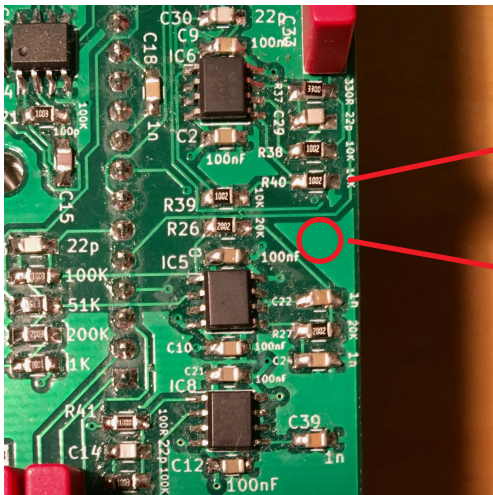
clee Bits Euro grounding fix for R40



The module works as-is but LINE OUT will be the same level as the SYNTH OUT

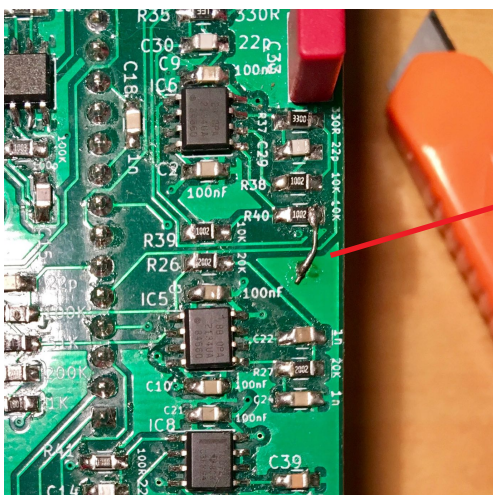
With the fix LINE OUT will be half the volume as SYNTH OUT

Locate R40 on the PCB.
The right side of the resistor should be connected to ground but isn't.



R40 ground side

scratch off some solder mask in the ground pour area.



Solder a small wire or resistor leg to connect R40 to ground.