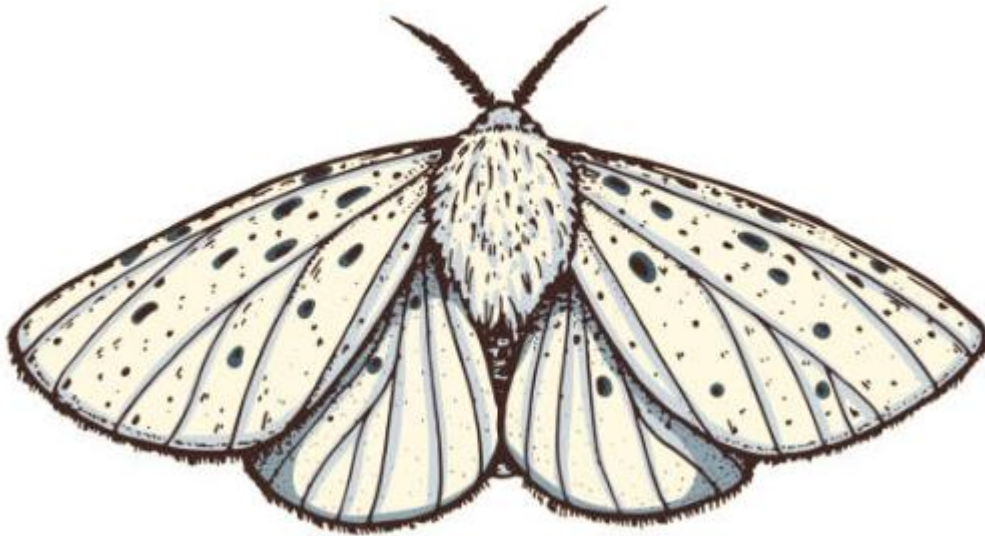


LUCID



1.1 Overall description

Lucid is a dual/2-channel CV-mixer (3 inputs each and an output per channel) with a chaotic CV core. A chaotic “engine” is normaled to input 1 on both channels. Each output (top jacks) has attenuverters to offset the “sum” on each channel. All inputs has attenuverters attached as well. The chaotic CV generator is completely removed if a signal is inserted to channel 1. This module is essential to create complex yet, reoccurring and semi random waveforms and patterns.

For more info and additional uses check out this YT video: https://youtu.be/P23_r4C4Xi8

2.1 The actual build.

Building this is straight forward. I usually place the power header and solder it in first. Then I usually place all the jacks and solder in the ground pin (the one sticking out from the jack with a swuare pad) from above/front side of the pcb. Place the pots, sert the LEDS into the pads (short leg into swuare pad) and put the panel on, make sure everything looks good from the front and that the 3mm leds are pepping out straight from behind the panel.. Attach a few or all nuts and solder everything in. Double check for any shorts before plugging it in. You are then done. Please enjoy LUCID.

BOM

Part	Designator	QTY	INFO	Product link
Thonkiconns	J1-J8	8	Thonkiconn jacks	https://www.thonk.co.uk/shop/thonkiconn/
100k pot	RV1-RV8	8	100k lin potentiometer T18	https://www.thonk.co.uk/shop/alpha-9mm-pots-vertical-t18/
Micro knobs	knobs	2	Must be Black	https://www.thonk.co.uk/shop/micro-knobs/
Euro rack Power pins, cut to length	SV1	1	10pin eurorack header	https://www.taydaelectronics.com/2x40-pin-2-54-mm-double-row-pin-header-strip.html
Dual color LED white	D5, D6	2	2 pin, 3mm dual led RED/white	https://www.ebay.com/itm/190894964341?var=490181180284